

Discharge Measurement Summary

Site name Sodhouse5
Site number 06
Operator(s) VAllen
File name Sodhouse5_20230626-152050.ft
Comment

Start time	6/26/2023 2:39 PM	Sensor type	Top Setting
End time	6/26/2023 2:59 PM	Handheld serial number	FT2H2219029
Start location latitude	43.250	Probe serial number	FT2P2219014
Start location longitude	-118.859	Probe firmware	1.30
Calculations engine	FlowTracker2	Handheld software	1.7

# Stations	Avg interval (s)	Total discharge (m³/s)
11	40	0.0441

Total width (m)	Total area (m²)	Wetted Perimeter (m)
1.219	0.48644	1.509

Mean SNR (dB)	Mean depth (m)	Mean velocity (m/s)
38	0.399	0.0906

Mean temp (°C)	Max depth (m)	Max velocity (m/s)
18.184	0.671	0.1724

Discharge Uncertainty		
Category	ISO	IVE
Accuracy	1.0%	1.0%
Depth	0.2%	2.2%
Velocity	0.6%	3.4%
Width	0.2%	0.2%
Method	1.7%	
# Stations	4.2%	
Overall	4.7%	4.1%

Discharge equation	Mid Section
Discharge uncertainty	IVE
Discharge reference	Rated

Data Collection Settings	
Salinity	0.000 PSS-78
Temperature	-
Sound speed	-
Mounting correction	0.000 %

Summary overview

No changes were made to this file
Quality control warnings

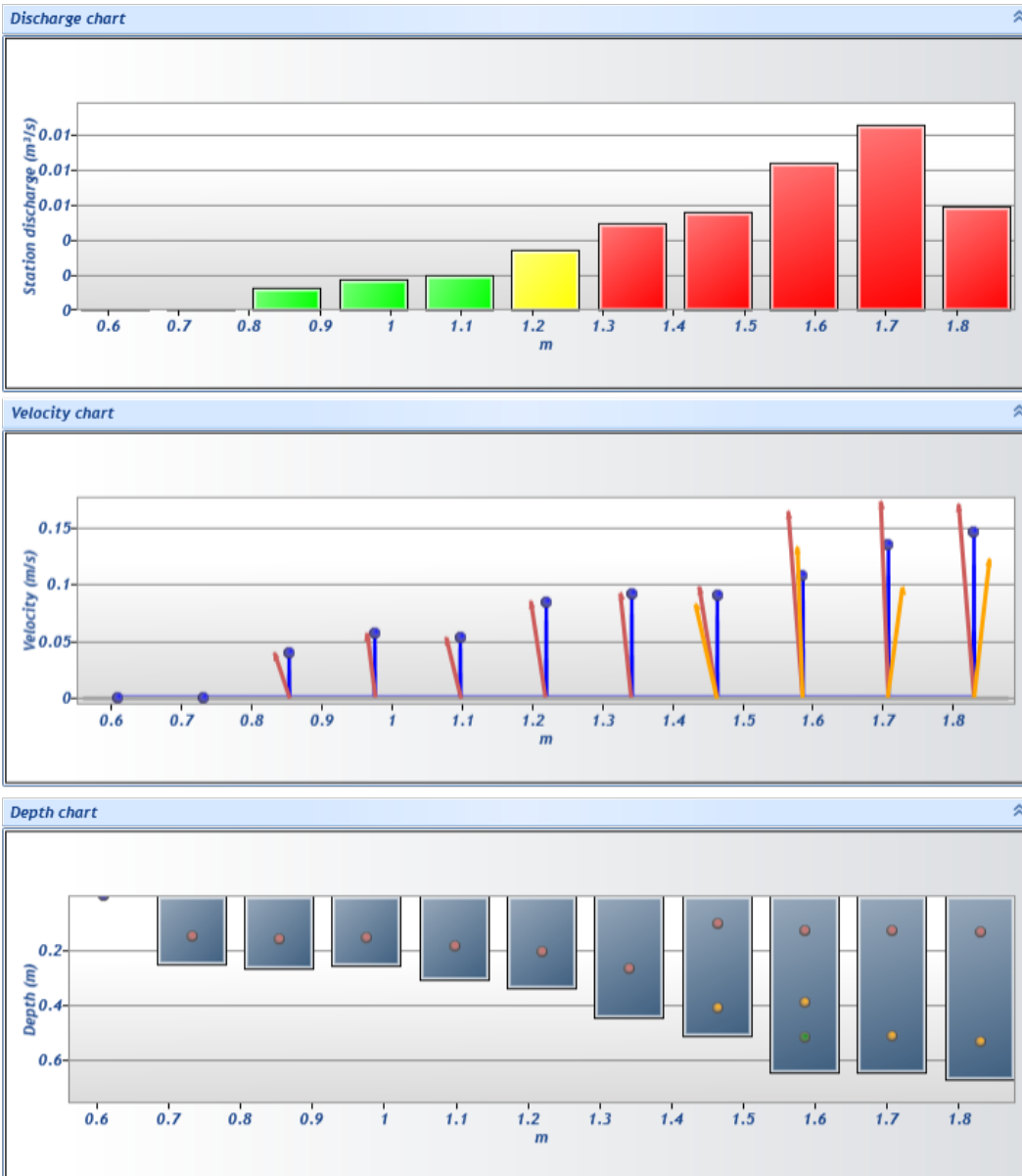


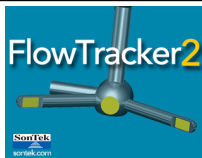
Discharge Measurement Summary

Site name Sodhouse5
Site number 06
Operator(s) VAllen
File name Sodhouse5_20230626-152050.ft
Comment

Station Warning Settings

Station discharge OK	Station discharge < 5.00%
Station discharge caution	5.00% >= Station discharge < 10.00%
Station discharge warning	Station discharge >= 10.00%



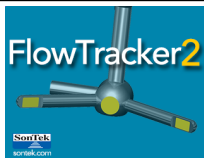


Discharge Measurement Summary

Site name Sodhouse5
Site number 06
Operator(s) VAllen
File name Sodhouse5_20230626-152050.ft
Comment

Measurement results

St#	Time	Location (m)	Method	Depth (m)	%Depth	Measured Depth (m)	Samples	Velocity (m/s)	Correction	Mean Velocity (m/s)	Area (m ²)	Flow (m ³ /s)	%Q	
0	2:39 PM	0.610	None	0.000	0.0000	0.000	0	0.0000	1.0000	0.0000	0.00000	0.0000	0.00	✓
1	2:39 PM	0.732	0.6	0.247	0.6000	0.148	80	0.0000	1.0000	0.0000	0.03010	0.0000	0.00	✓
2	2:41 PM	0.853	0.6	0.265	0.6000	0.159	80	0.0401	1.0000	0.0401	0.03233	0.0013	2.94	✓
3	2:42 PM	0.975	0.6	0.253	0.6000	0.152	80	0.0565	1.0000	0.0565	0.03084	0.0017	3.95	✓
4	2:44 PM	1.097	0.6	0.308	0.6000	0.185	80	0.0537	1.0000	0.0537	0.03753	0.0020	4.57	✓
5	2:45 PM	1.219	0.6	0.338	0.6000	0.203	80	0.0845	1.0000	0.0845	0.04125	0.0035	7.91	✓
6	2:47 PM	1.341	0.6	0.442	0.6000	0.265	80	0.0919	1.0000	0.0919	0.05388	0.0050	11.23	✓
7	2:50 PM	1.463	0.2/0.8	0.512	0.2000	0.102	80	0.0976	1.0000	0.0902	0.06243	0.0056	12.76	✓
7	2:50 PM	1.463	0.2/0.8	0.512	0.8000	0.410	80	0.0827	1.0000	0.0902	0.06243	0.0056	12.76	✓
8	2:53 PM	1.585	0.2/0.6/0.8	0.646	0.2000	0.129	80	0.1637	1.0000	0.1072	0.07878	0.0084	19.15	✓
8	2:53 PM	1.585	0.2/0.6/0.8	0.646	0.6000	0.388	80	0.1324	1.0000	0.1072	0.07878	0.0084	19.15	✓
8	2:53 PM	1.585	0.2/0.6/0.8	0.646	0.8000	0.517	80	0.0003	1.0000	0.1072	0.07878	0.0084	19.15	✓
9	2:56 PM	1.707	0.2/0.8	0.643	0.2000	0.129	80	0.1724	1.0000	0.1347	0.07841	0.0106	23.96	✓
9	2:56 PM	1.707	0.2/0.8	0.643	0.8000	0.515	80	0.0970	1.0000	0.1347	0.07841	0.0106	23.96	✓
10	2:59 PM	1.829	0.2/0.8	0.671	0.2000	0.134	80	0.1700	1.0000	0.1459	0.04088	0.0060	13.53	✓
10	2:59 PM	1.829	0.2/0.8	0.671	0.8000	0.536	80	0.1219	1.0000	0.1459	0.04088	0.0060	13.53	✓



Discharge Measurement Summary

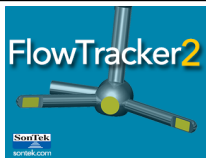
Site name Sodhouse5
Site number 06
Operator(s) VAllen
File name Sodhouse5_20230626-152050.ft
Comment

Quality Control Settings

Maximum depth change 50.00%
Maximum spacing change 100.00%
SNR threshold 10 dB
Standard error threshold 0.0100 m/s
Spike threshold 10.00%
Maximum velocity angle 20.0 deg
Maximum tilt angle 5.0 deg

Quality control warnings

St#	Time	Location (m)	Method	Depth (m)	%Depth	Measured Depth (m)	Warnings
1	2:39 PM	0.732	0.6	0.247	0.6000	0.148	Large SNR Variation
2	2:41 PM	0.853	0.6	0.265	0.6000	0.159	Velocity Angle > QC
4	2:44 PM	1.097	0.6	0.308	0.6000	0.185	Velocity Angle > QC
6	2:47 PM	1.341	0.6	0.442	0.6000	0.265	High Stn % Discharge
7	2:50 PM	1.463	0.2/0.8	0.512	0.2000	0.102	Velocity Angle > QC,High Stn % Discharge
7	2:50 PM	1.463	0.2/0.8	0.512	0.8000	0.410	Velocity Angle > QC,High Stn % Discharge
8	2:53 PM	1.585	0.2/0.6/0.8	0.646	0.2000	0.129	Low SNR,SNR Threshold Variation,High Stn % Discharge
8	2:53 PM	1.585	0.2/0.6/0.8	0.646	0.6000	0.388	Low SNR,SNR Threshold Variation,High Stn % Discharge
8	2:53 PM	1.585	0.2/0.6/0.8	0.646	0.8000	0.517	Low SNR,SNR Threshold Variation,High Stn % Discharge
9	2:56 PM	1.707	0.2/0.8	0.643	0.2000	0.129	Boundary Interference,Large SNR Variation,High Stn % Discharge
9	2:56 PM	1.707	0.2/0.8	0.643	0.8000	0.515	Boundary Interference,Large SNR Variation,High Stn % Discharge
10	2:59 PM	1.829	0.2/0.8	0.671	0.2000	0.134	High Stn % Discharge
10	2:59 PM	1.829	0.2/0.8	0.671	0.8000	0.536	High Stn % Discharge

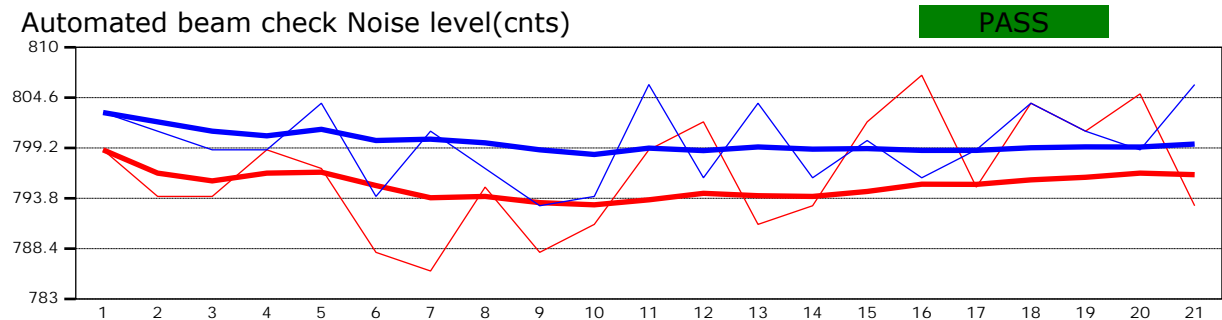
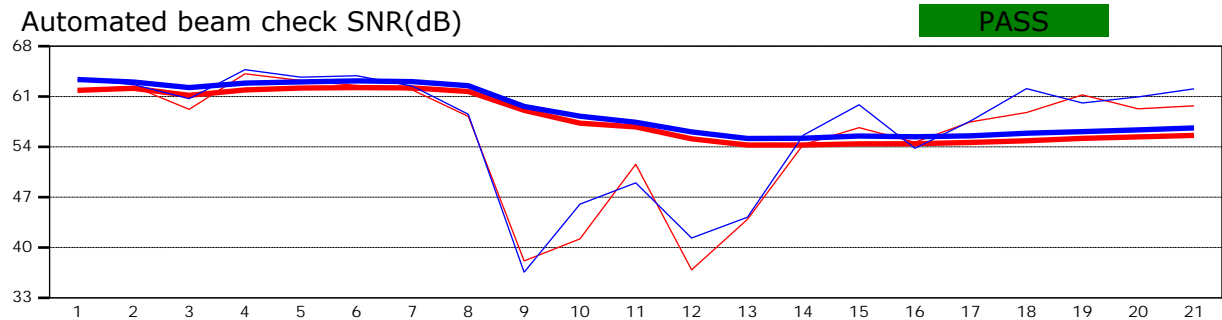


Discharge Measurement Summary

Site name Sodhouse5
Site number 06
Operator(s) VAllen
File name Sodhouse5_20230626-152050.ft
Comment

Beam 1	
Beam 2	

Automated beam check Start time 6/26/2023 2:36:27 PM



Automated beam check Quality control warnings
No quality control warnings



Discharge Measurement Summary

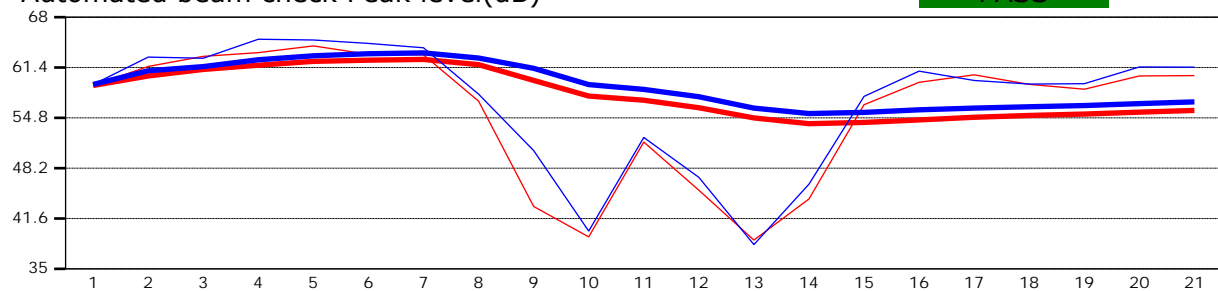
Site name Sodhouse5
Site number 06
Operator(s) VAllen
File name Sodhouse5_20230626-152050.ft
Comment

Beam 1	
Beam 2	

Automated beam check Start time 6/26/2023 2:36:27 PM

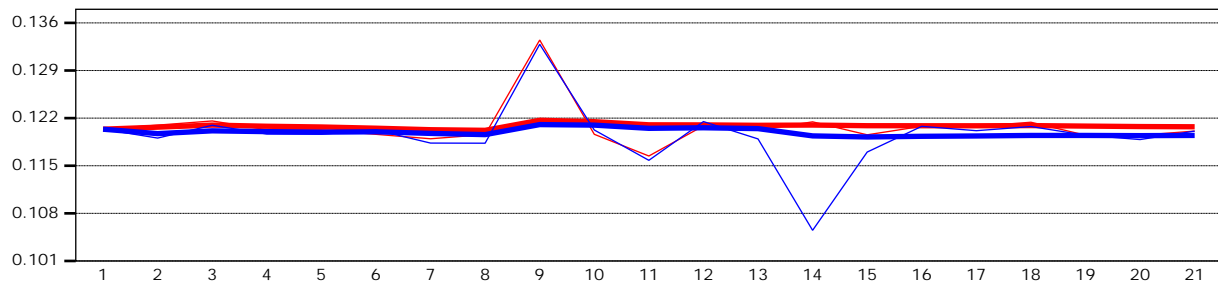
Automated beam check Peak level(dB)

PASS



Automated beam check Peak position(m)

PASS



Automated beam check Quality control warnings

No quality control warnings